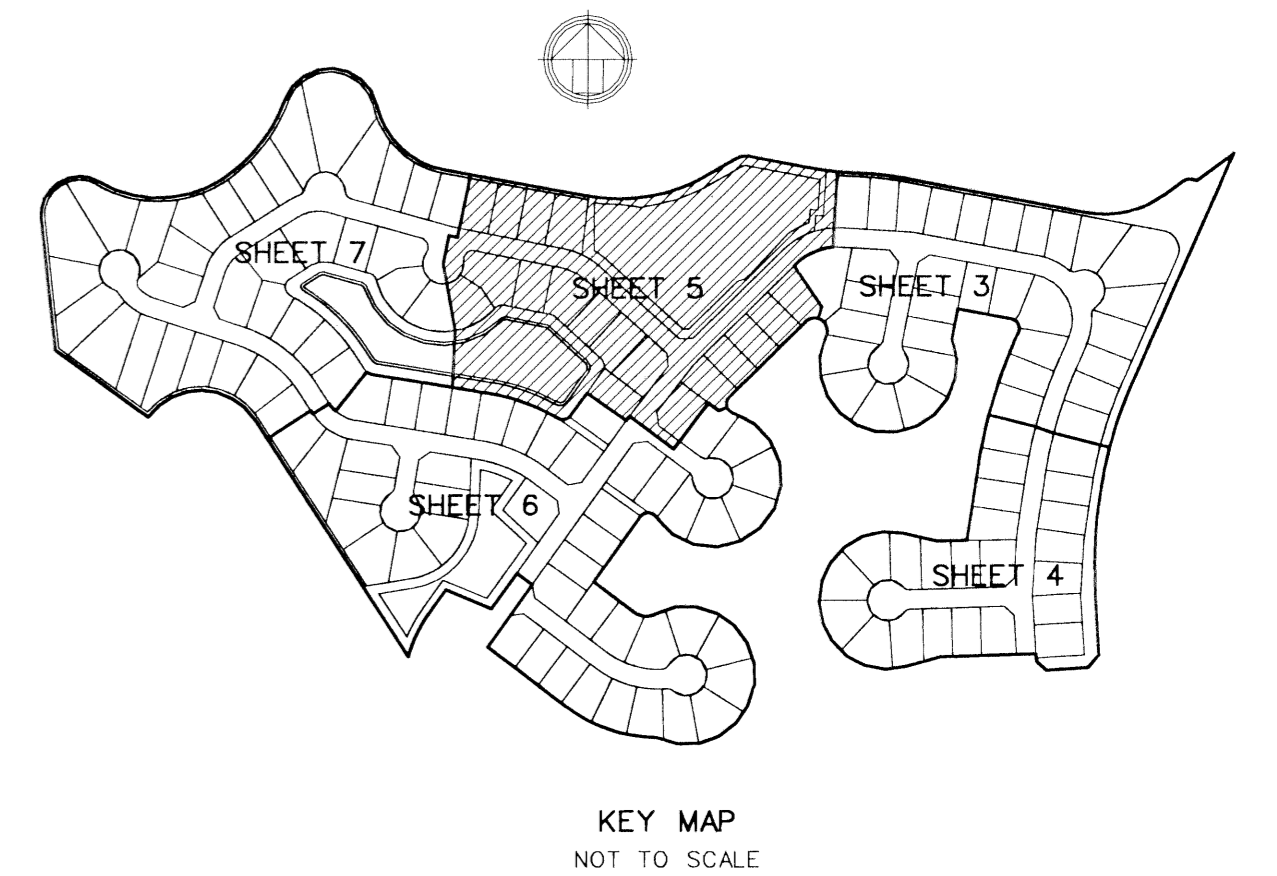
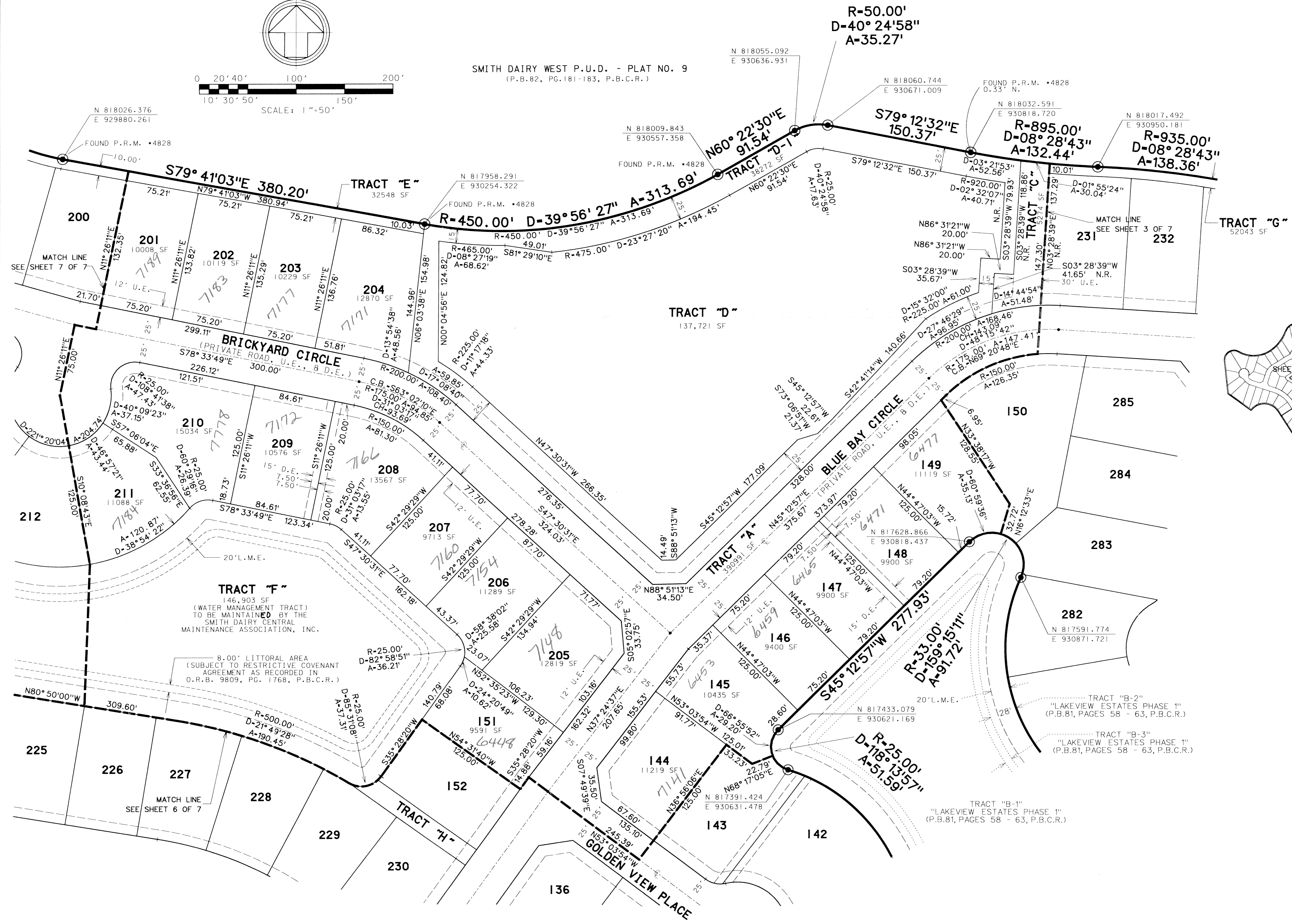
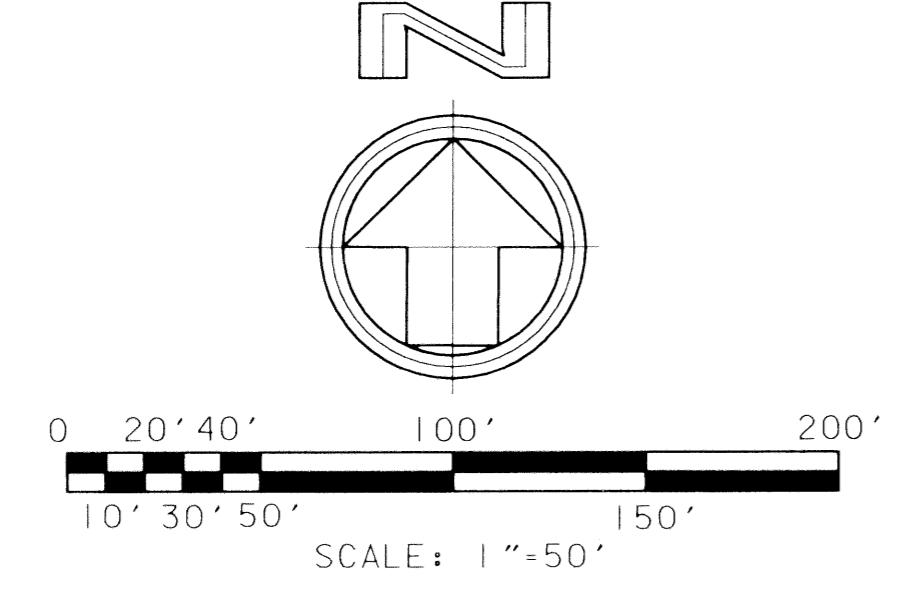


THIS INSTRUMENT WAS PREPARED BY:  
**JEFF S. HODAPP OF**  
**CARNAHAN-PROCTOR AND ASSOCIATES, INC.**  
**CONSULTING ENGINEERS**  
 SURVEYORS ENGINEERS PLANNERS  
 6191 WEST ATLANTIC BLVD., MARGATE, FLORIDA 33063  
 JANUARY 1998 950508J JSH

SMITH DAIRY EAST P.U.D.  
**LAKEVIEW ESTATES PHASES 3, 4 & 5**

A REPLAT OF A PORTION OF BLOCKS 38 AND 39, "PALM BEACH FARMS CO. PLAT NO. 3"  
 (P.B.2, PGS.45-54, P.B.C.R.) AND THE RIGHTS-OF-WAY INCLUDED THEREIN,  
 IN SECTION 4, TOWNSHIP 45 SOUTH, RANGE 42 EAST, PALM BEACH COUNTY, FLORIDA

SHEET 5 OF 7 SHEETS



- LEGEND:**
- SET PERMANENT REFERENCE MONUMENT (P.R.M.) PSM •LS5111 UNLESS OTHERWISE NOTED
  - PERMANENT CONTROL POINT (P.C.P.)
  - CENTERLINE
  - ARC LENGTH
  - D DELTA (CENTRAL ANGLE)
  - D.E. DRAINAGE EASEMENT
  - L.A.E. LIMITED ACCESS EASEMENT
  - L.M.A.E. LAKE MAINTENANCE ACCESS EASEMENT
  - L.M.E. LAKE MAINTENANCE EASEMENT
  - L.S.E. LIFT STATION EASEMENT
  - L.W.D.D. LAKE WORTH DRAINAGE DISTRICT
  - N.R. NON-RADIAL
  - O.R.B. OFFICIAL RECORDS BOOK
  - PG. PAGE
  - P.B. PLAT BOOK
  - P.B.C.R. PALM BEACH COUNTY RECORDS
  - P.O.B. POINT OF BEGINNING
  - P.O.C. POINT OF COMMENCEMENT
  - P.U.D. PLANNED UNIT DEVELOPMENT
  - R RADIUS
  - R/W RIGHT-OF-WAY
  - SF SQUARE FEET
  - U.E. UTILITY EASEMENT
  - CH CHORD
  - C.B. CHORD BEARING

Subdivision: Lakeview Estates  
 Phase: 3, 4 & 5  
 Book: 84  
 Page: 186  
 Flood Zone: 0  
 Flood Map: 170A  
 Zoning: PUD  
 CURB#: 44  
 SE: 45-87  
 TAZ: 42  
 RUD NAME: Smith Dairy East

FILE: g:\projects\se081\se081pp5.dgn  
 DATE: 05-Feb-99 09:16